

When you need a true north for integrated program management support, TruePMOSM delivers proven expertise for challenging and complex program management needs.

Contact

pmo@guidehouse.com

TruePMOSM Integrated Program Management Office Solution

The successful delivery of complex projects requires an integrated program management office (PMO) that can combine subject matter expertise with an agile, scalable, tech-enabled approach — one that standardizes and automates processes, while mitigating project risk, promoting transparency, and delivering on business objectives.

By strategically combining the fundamentals of project management with a focus on business transformation, TruePMOSM ensures programs are delivered consistently, with high quality, on time and on budget. Our unique PMO methodology includes best-practice management standards and versatile performance management techniques to provide a flexible program framework that's tailored to our client's capabilities and goals, with actionable, data-backed insights and scalable technology, tools, and templates. Each step of the way, Guidehouse's experts help clients guard against risk while achieving the maximum benefits to transform the organization.

Solutions for Transformation

Partnering with Guidehouse provides the large-scale technology deployment, change management, and stakeholder management solutions clients need. We augment these capabilities with strategic guidance on program management, risk and resource management, and market intelligence through Guidehouse Insights.

Guidehouse's pragmatic, client-focused approach is designed to maximize efficiency, mitigate risk, ensure effective communication and coordination, and realize value at every stage of the program lifecycle, simplifying the complexities of:

- Project and Program Governance
- Risk and Issue Management
- Integrated Schedule Management
- Quality and Knowledge Management
- Financial Planning and Management
- Change and Stakeholder Management

With an eye toward transformation, our client-dedicated teams of PMO experts utilize tools and best practices proven in multi-stakeholder project management. We quickly assess the needs of each client program and create a customized structure, developing clearly defined roles, decision-making processes, and effective performance monitoring methods for core focus areas:

- Program Management – Upfront planning, scope, schedule, and tracking
- Technical Development – Creating a customized tech platform for the complete project management lifecycle
- Stakeholder Engagement – Managing and aligning cross-stakeholder communications

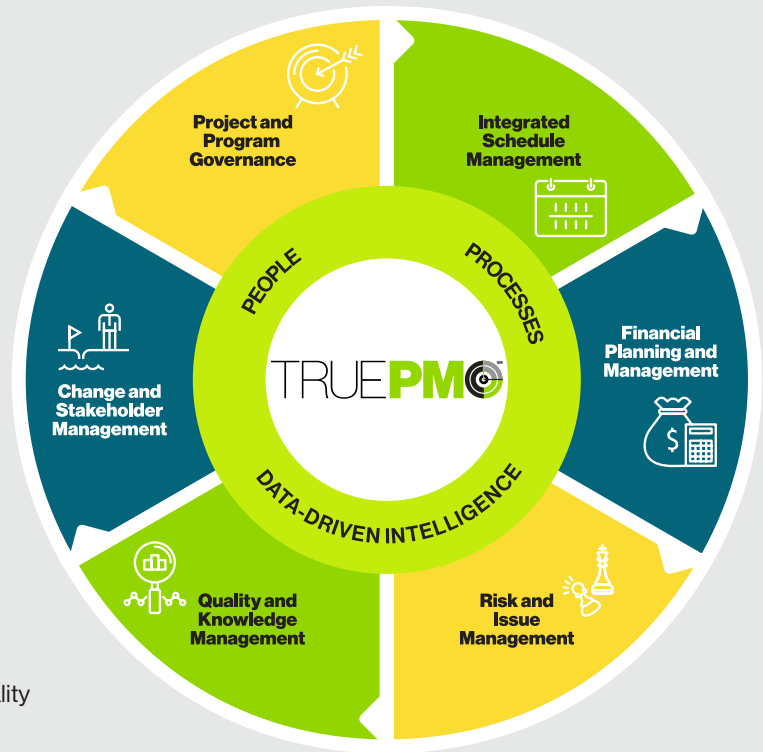


Proven Methodology and Framework

Our robust PMO methodology is based on proven experience and deep practitioner knowledge of our clients, their specific program topics, and the size and scale of their programs. Our framework features PMO tools, templates, and models that promote integration and enable the successful management and delivery of large, complex, transformational programs with flexible design for agile, lean, or waterfall methodologies.

For each engagement, our experts rely on time-tested PMO principles:

- We serve as a single source of truth for all information across the program and use an integrated approach to keep all stakeholders informed and involved
- We provide full access, offering a clear and transparent approach with no surprises
- We follow standard project management processes and procedures, upholding high standards and a commitment to quality
- We develop and implement pragmatic processes fit for purpose that provide value
- We are a trusted adviser, offering actionable, tailored recommendations based on industry best practices
- We foster workstream integration with powerful visuals and dashboards and align all stakeholders through sync meetings and risk reviews
- We value consistency by making sure programs and projects are repeatable and consistent with the right controls in place
- We keep a continuous improvement mindset to regularly review and enhance processes
- We use an integrated staffing model that leverages a one-team approach to build trust between business units



Dedicated Team of PMO Professionals

Guidehouse puts client priorities at the forefront of every program. We know your business, risks, systems, people, and regulatory environment, and our expansive operational, technological, and sector-specific expertise add value to every client program.

Contact us today to learn how Guidehouse can help you outwit complexity and make your organization's vision for transformation a reality.
pmo@guidehouse.com



[guidehouse.com/pmo](https://www.guidehouse.com/pmo)

About Guidehouse

Guidehouse is a leading global provider of consulting services to the public and commercial markets with broad capabilities in management, technology, and risk consulting. We help clients address their toughest challenges and navigate significant regulatory pressures with a focus on transformational change, business resiliency, and technology-driven innovation. Across a range of advisory, consulting, outsourcing, and digital services, we create scalable, innovative solutions that prepare our clients for future growth and success. The company has more than 10,000 professionals in over 50 locations globally. Guidehouse is a Veritas Capital portfolio company, led by seasoned professionals with proven and diverse expertise in traditional and emerging technologies, markets, and agenda-setting issues driving economies around the world. For more information, please visit: www.guidehouse.com.

©2022 Guidehouse Inc. All rights reserved. W346208

This content is for general informational purposes only, and should not be used as a substitute for consultation with professional advisors. This publication may be used only as expressly permitted by license from Guidehouse and may not be otherwise reproduced, modified, distributed, or used without the expressed written permission of Guidehouse.

